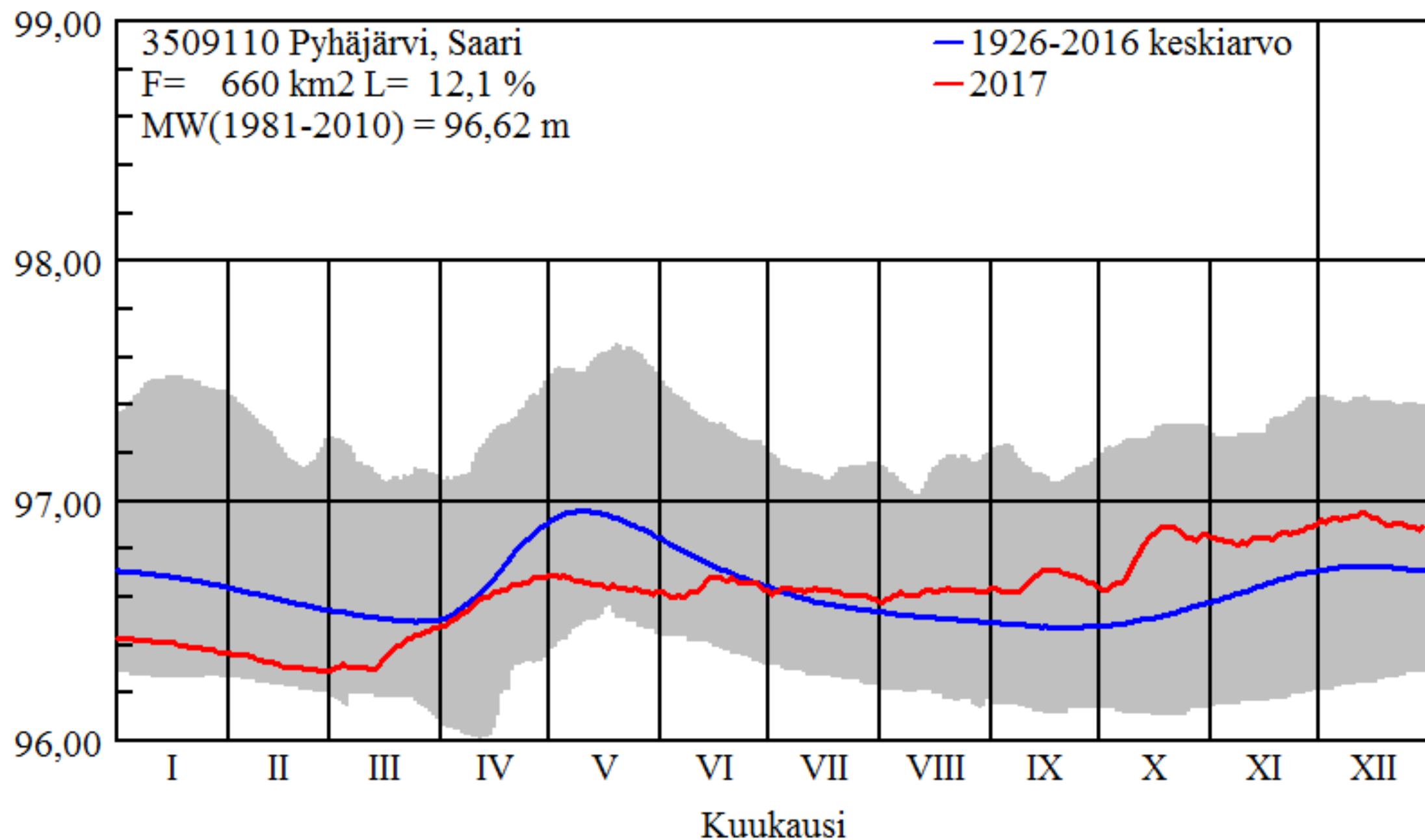


# Saarensalmesta mitatut vedenkorkeudet

Vuodesta 2001 alkaen

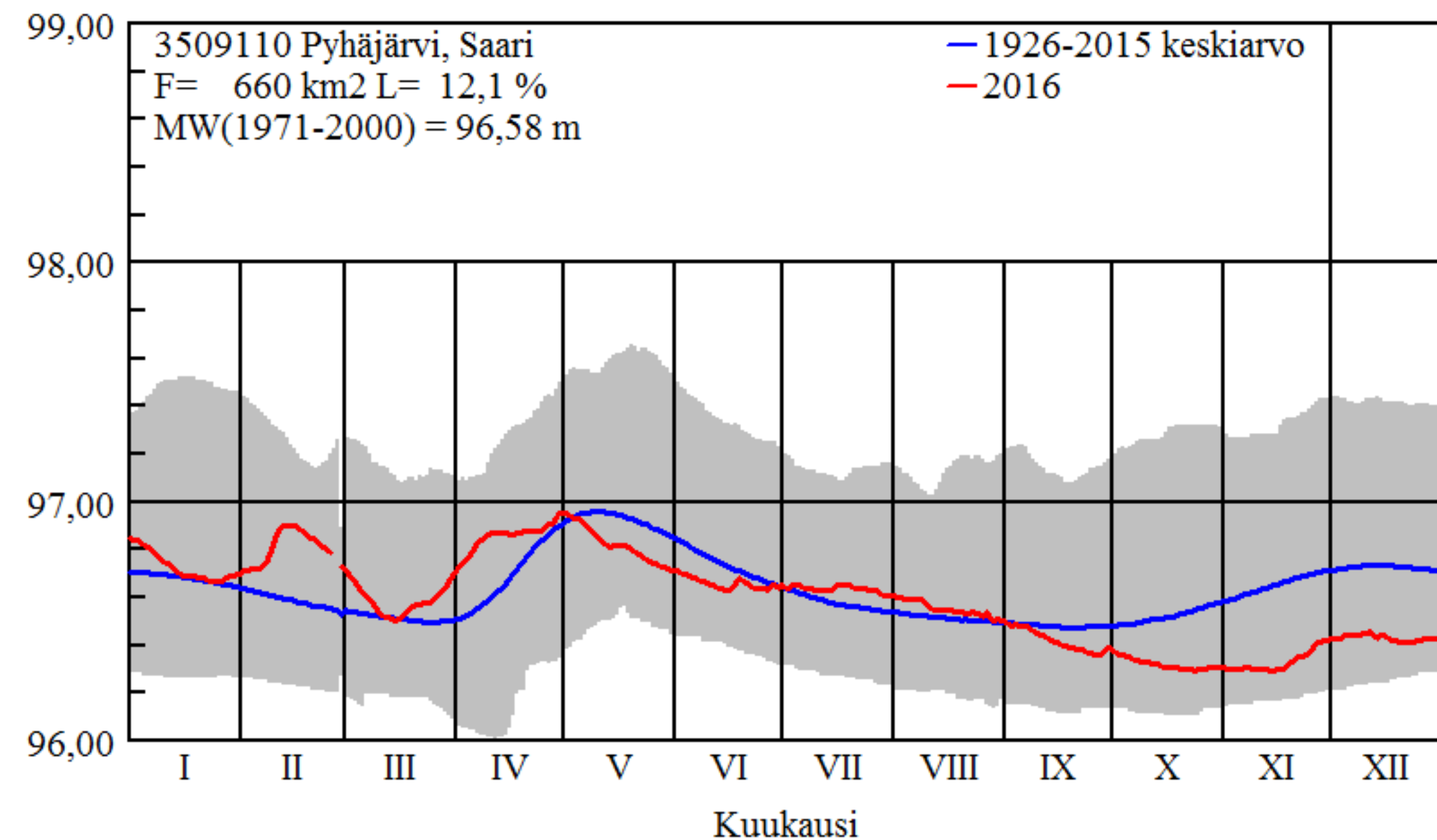
N60+m

Vedenkorkeus



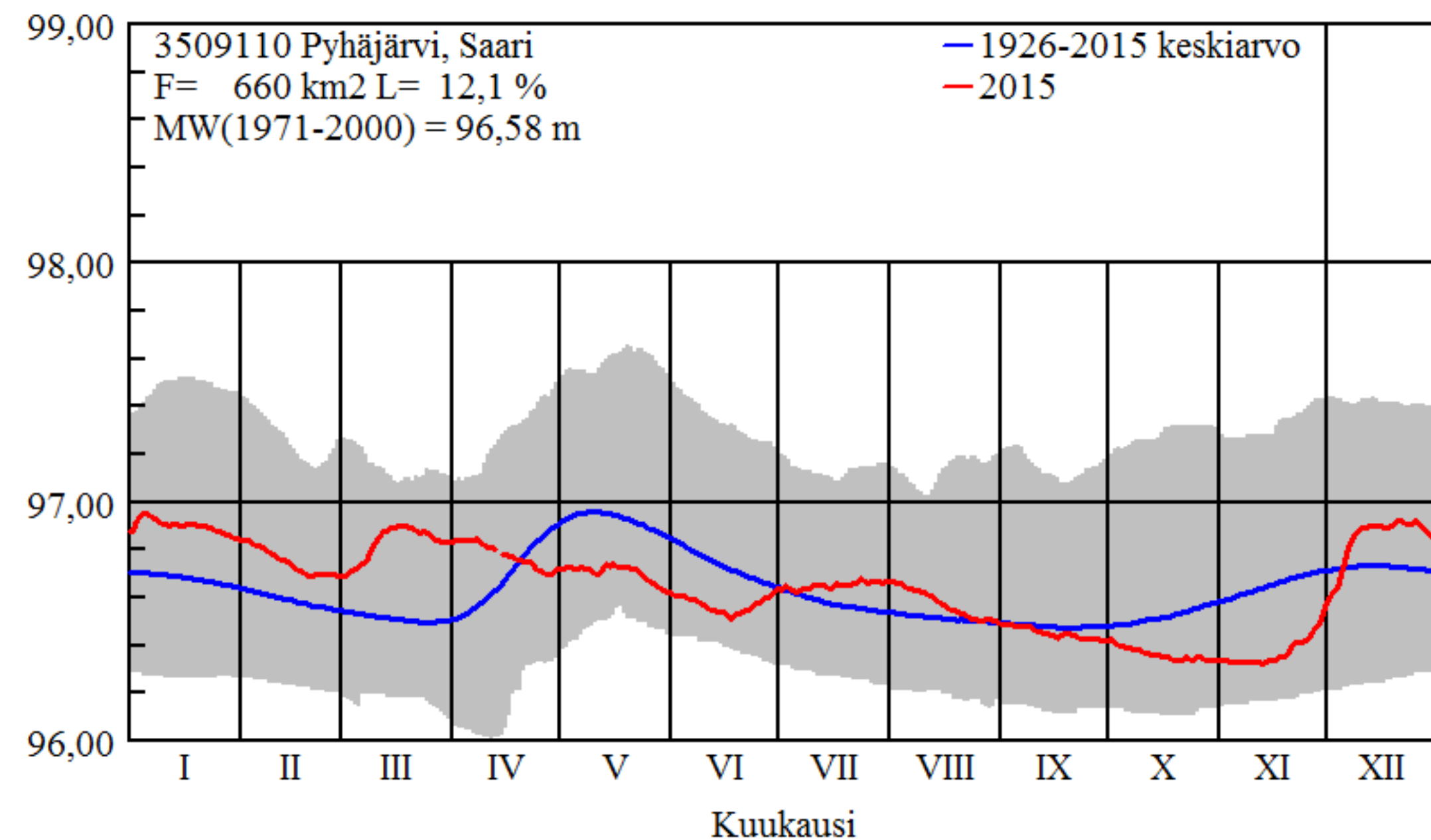
N60+m

Vedenkorkeus



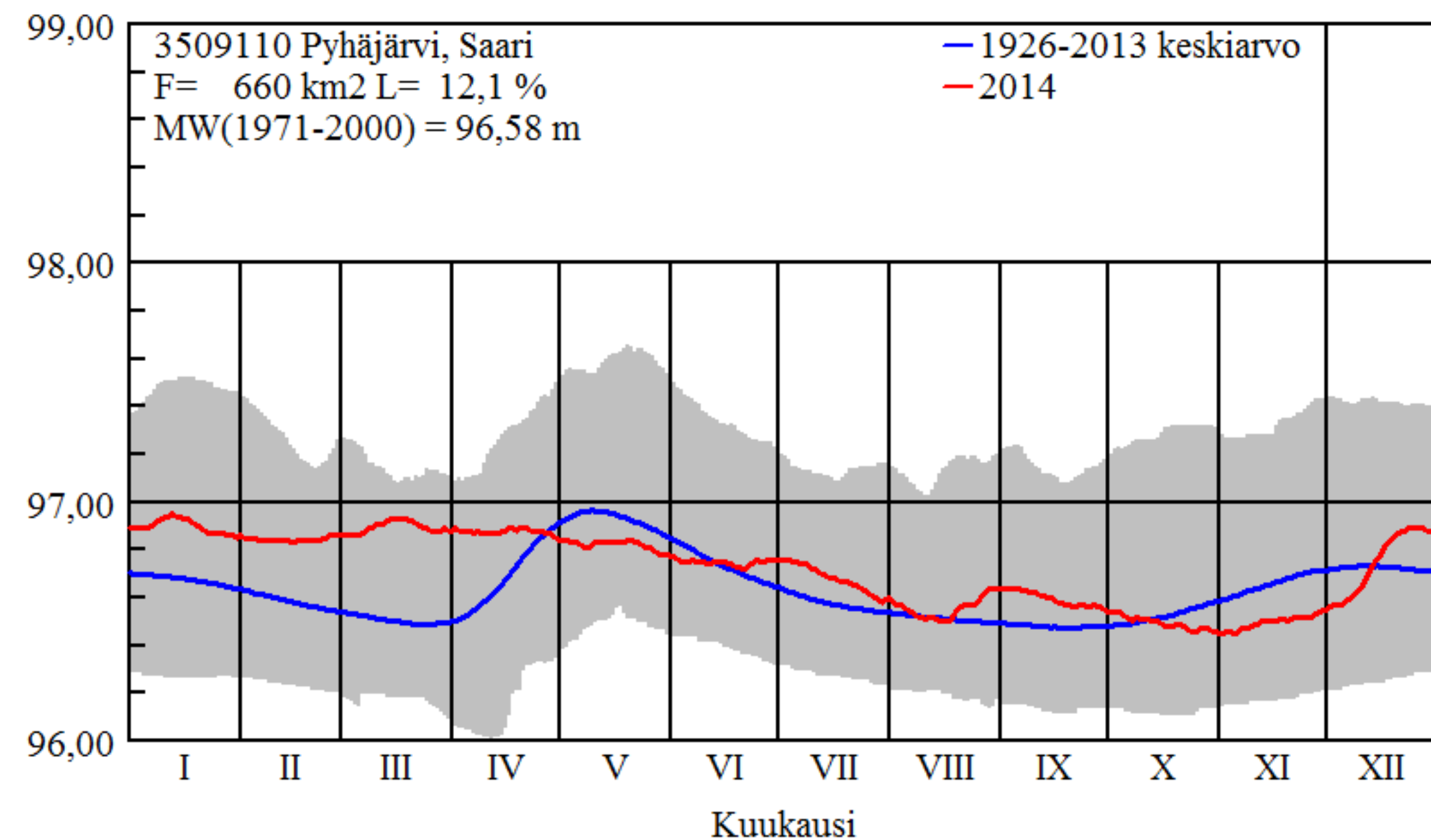
N60+m

Vedenkorkeus



N60+m

Vedenkorkeus



N60+m

# Vedenkorkeus

99,00

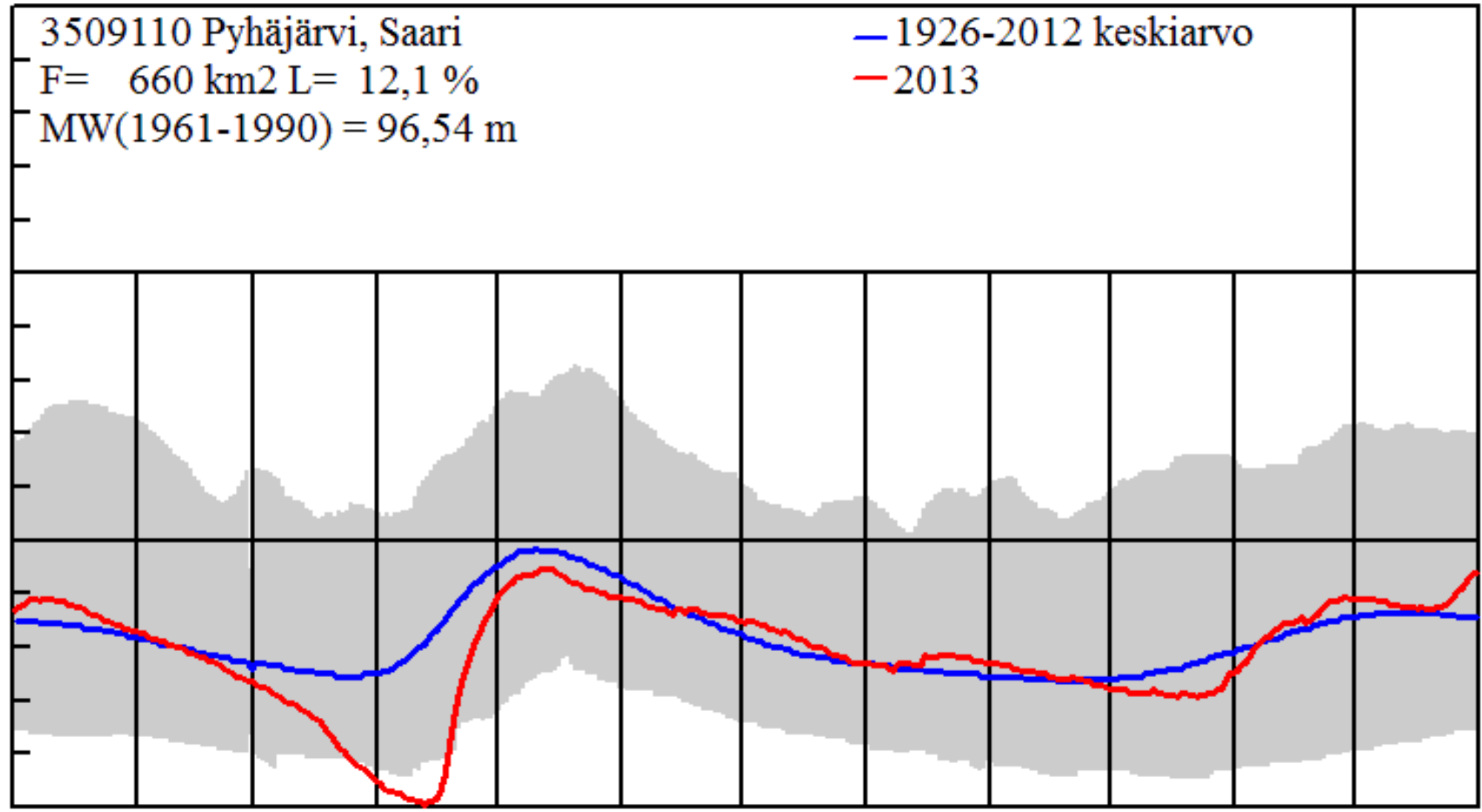
3509110 Pyhäjärvi, Saari  
F= 660 km<sup>2</sup> L= 12,1 %  
MW(1961-1990) = 96,54 m

— 1926-2012 keskiarvo  
— 2013

98,00

97,00

96,00



Kuukausi

N60+m

# Vedenkorkeus

99,00

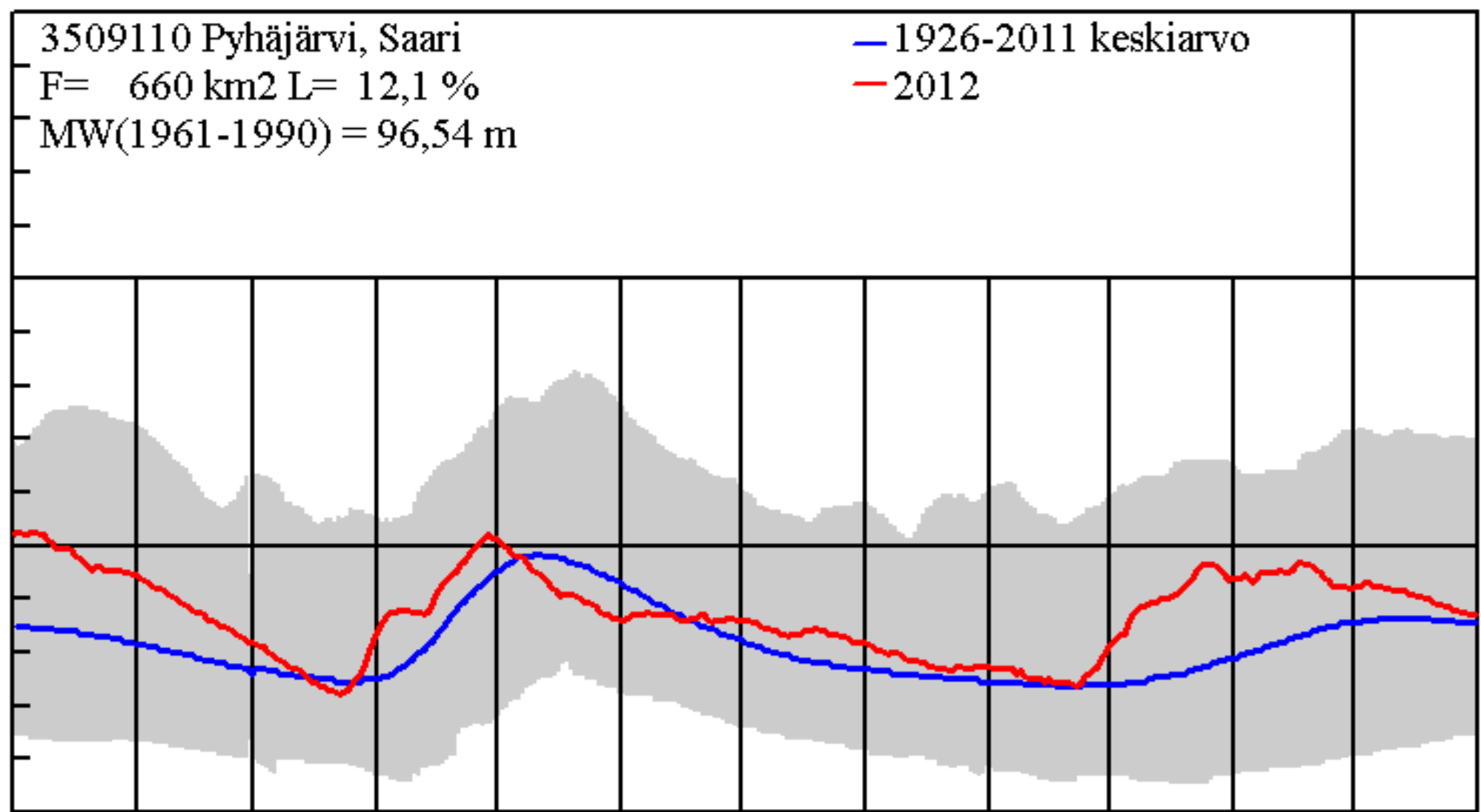
3509110 Pyhäjärvi, Saari  
F= 660 km<sup>2</sup> L= 12,1 %  
MW(1961-1990) = 96,54 m

— 1926-2011 keskiarvo  
— 2012

98,00

97,00

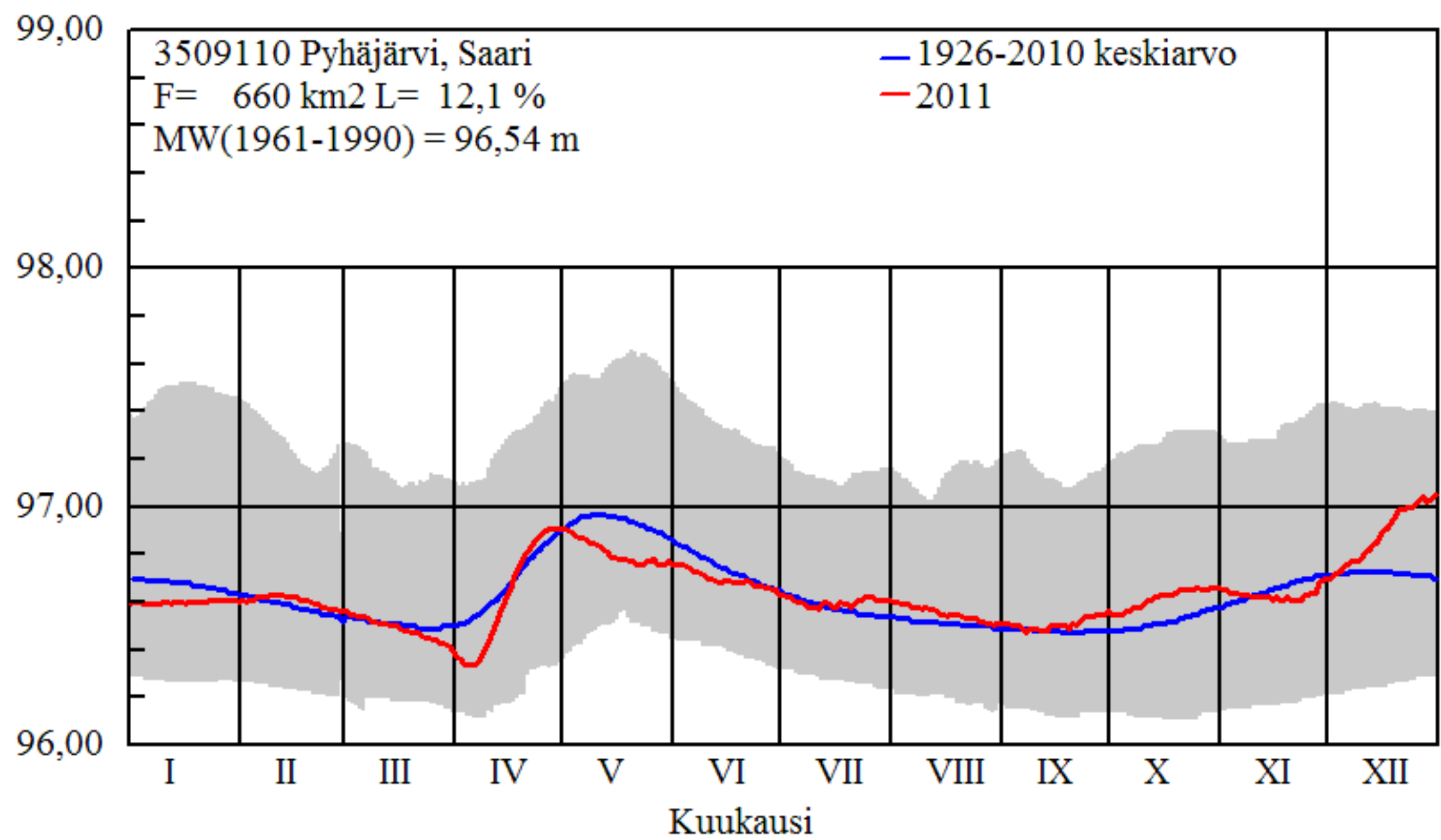
96,00



Kuukausi

N60+m

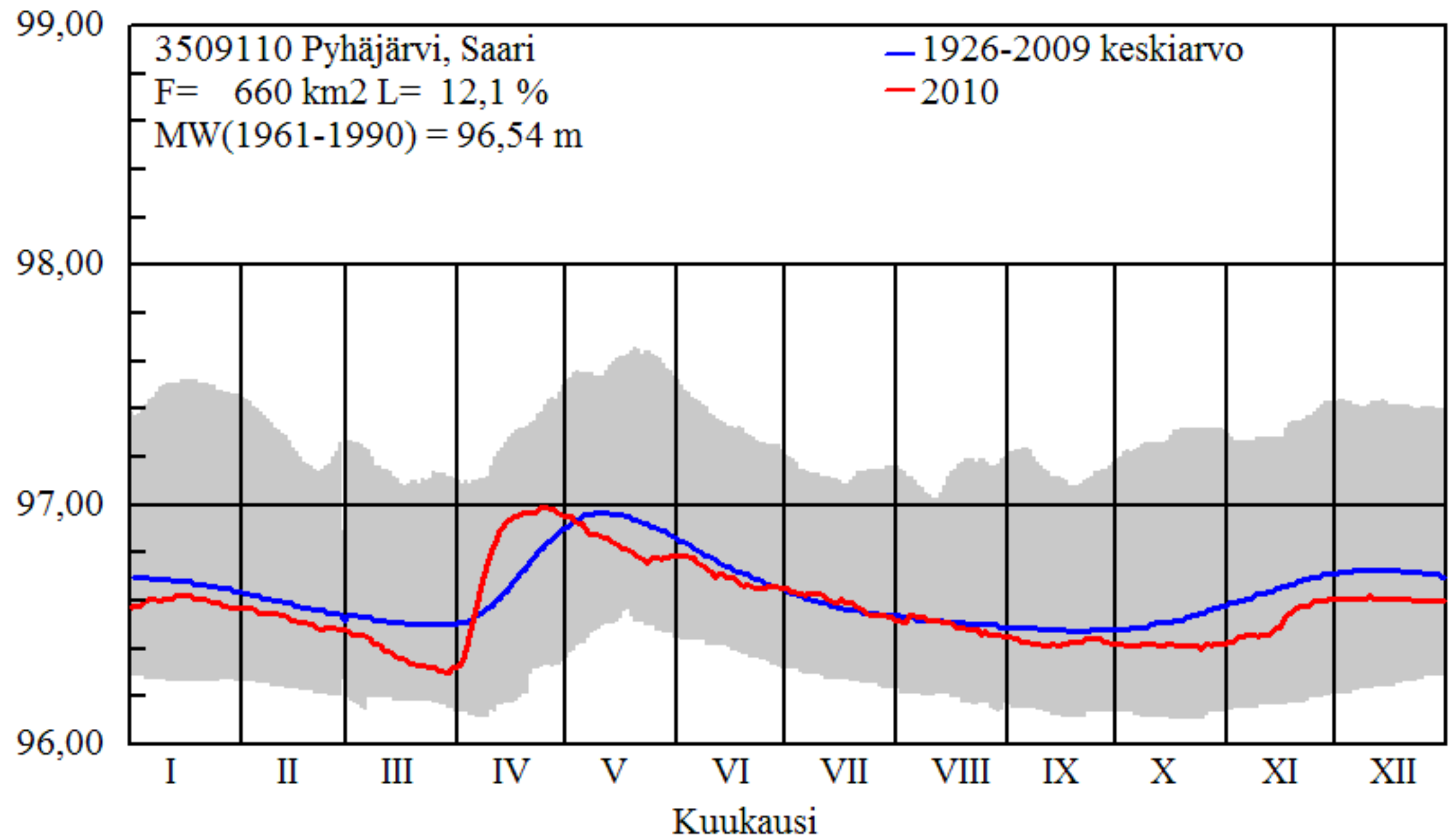
# Vedenkorkeus





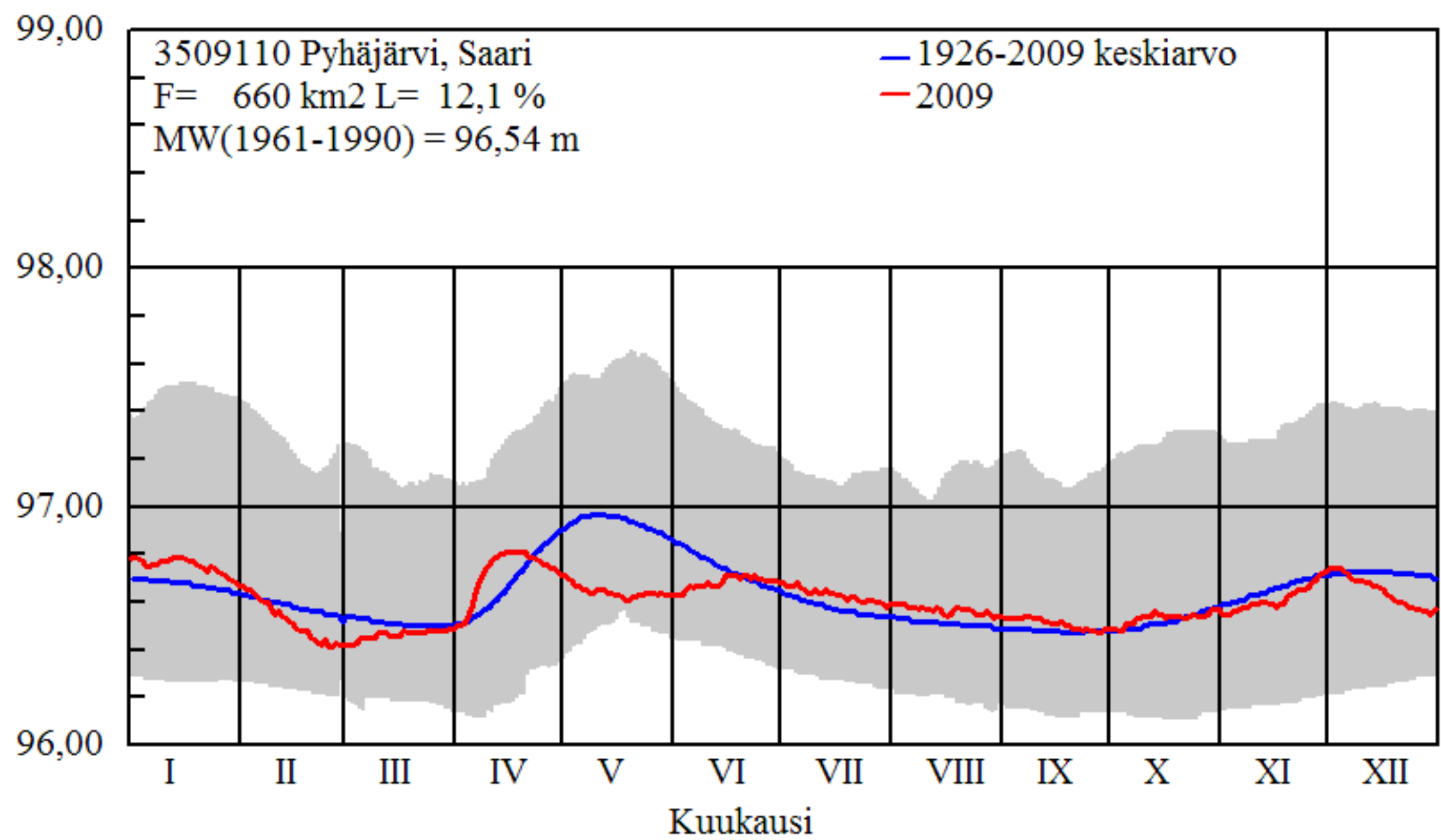
N60+m

# Vedenkorkeus



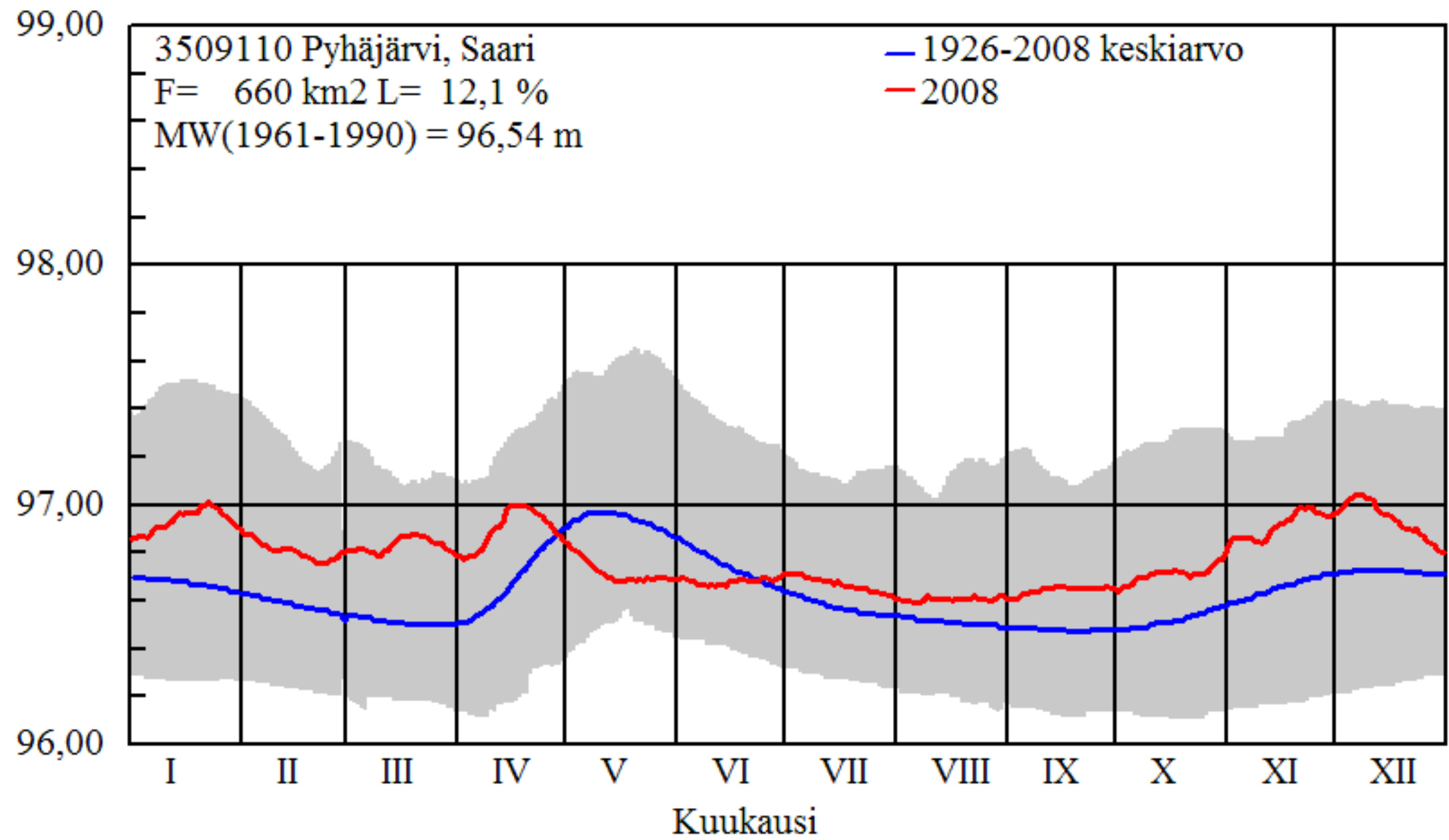
N60+m

# Vedenkorkeus



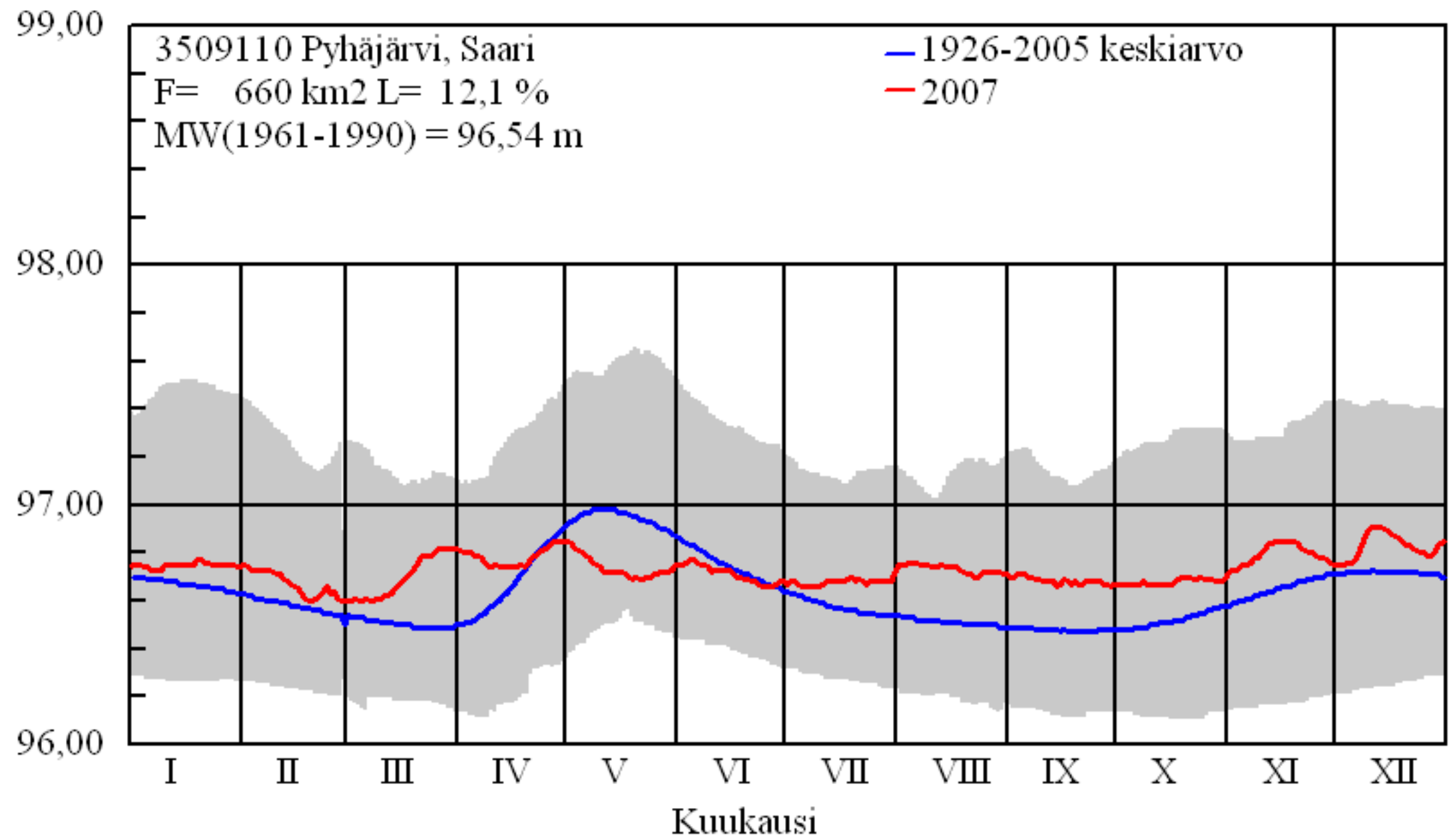
N60+m

# Vedenkorkeus



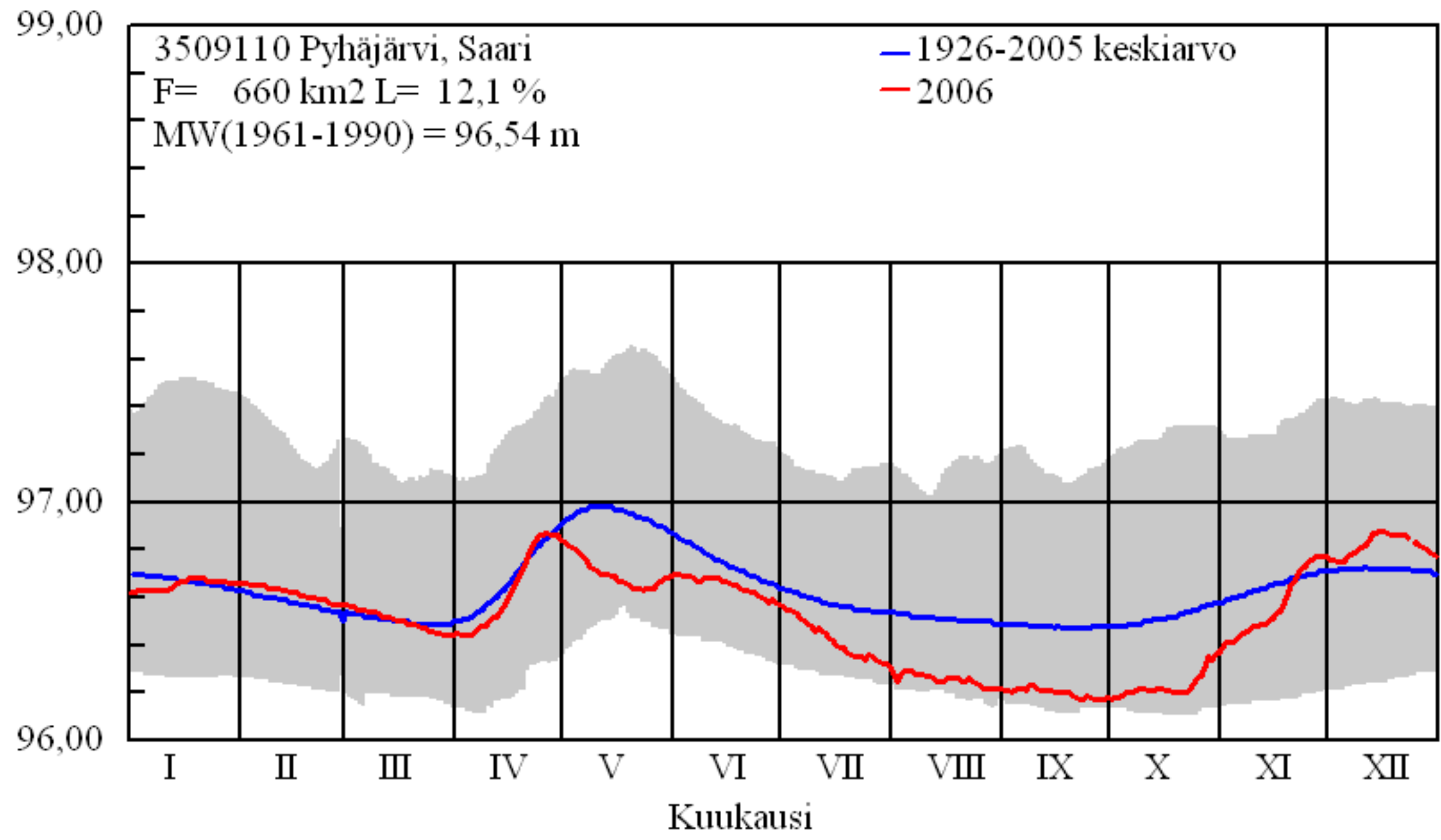
N60+m

# Vedenkorkeus



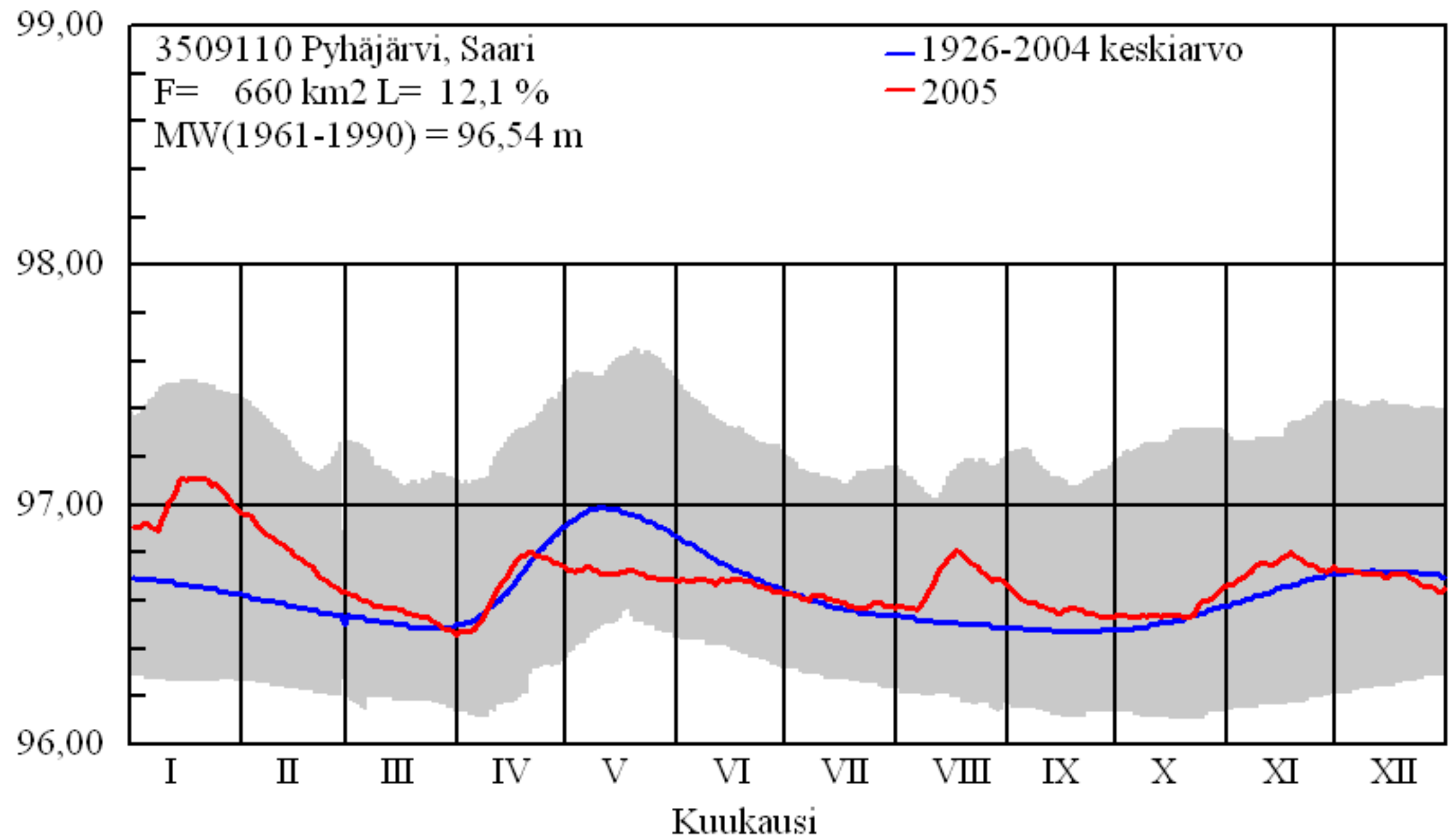
N60+m

# Vedenkorkeus



N60+m

# Vedenkorkeus

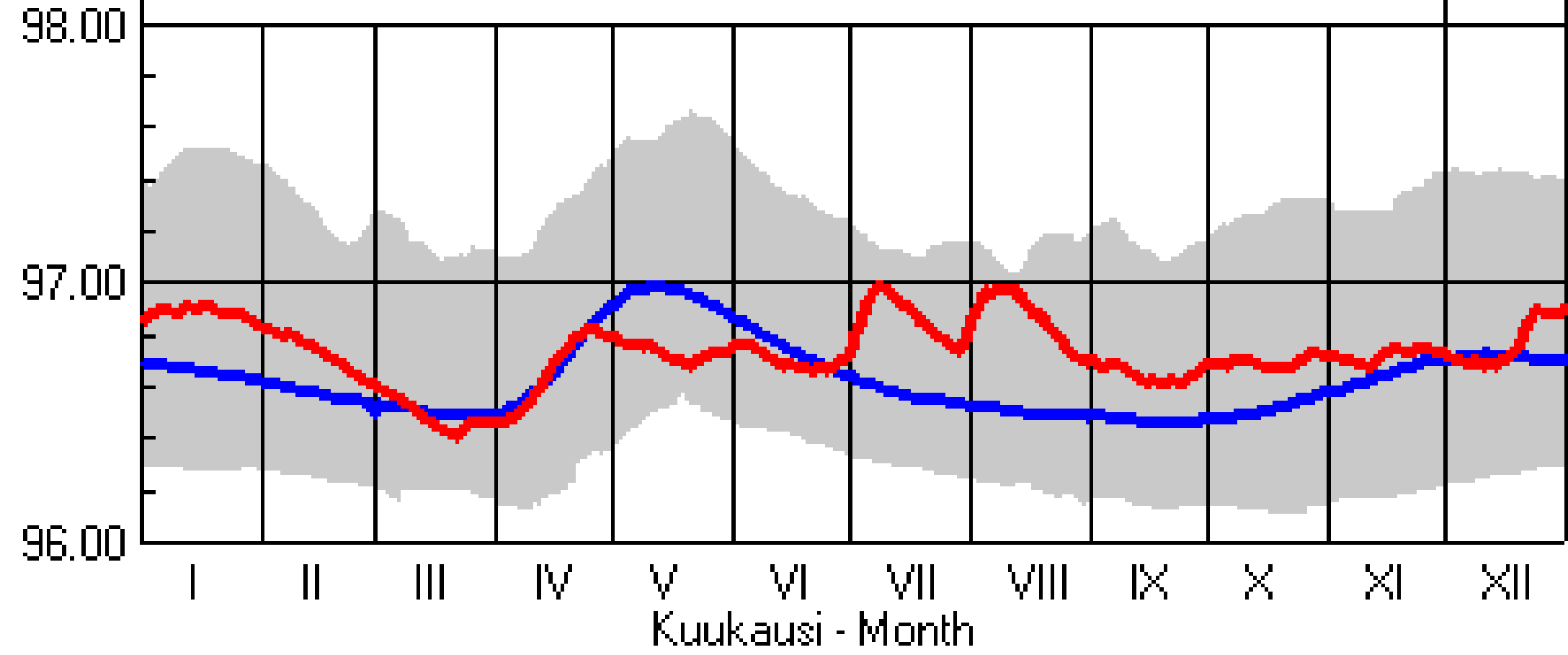


N60+m

# Vedenkorkeus - Water stage

3509110 Pyhäjärvi, Saari  
F= 660 km<sup>2</sup> L= 12.1 %  
M/w(1961-1990) = 96.54 m

— 1926-2003 keskiarvo - mean  
— 2004

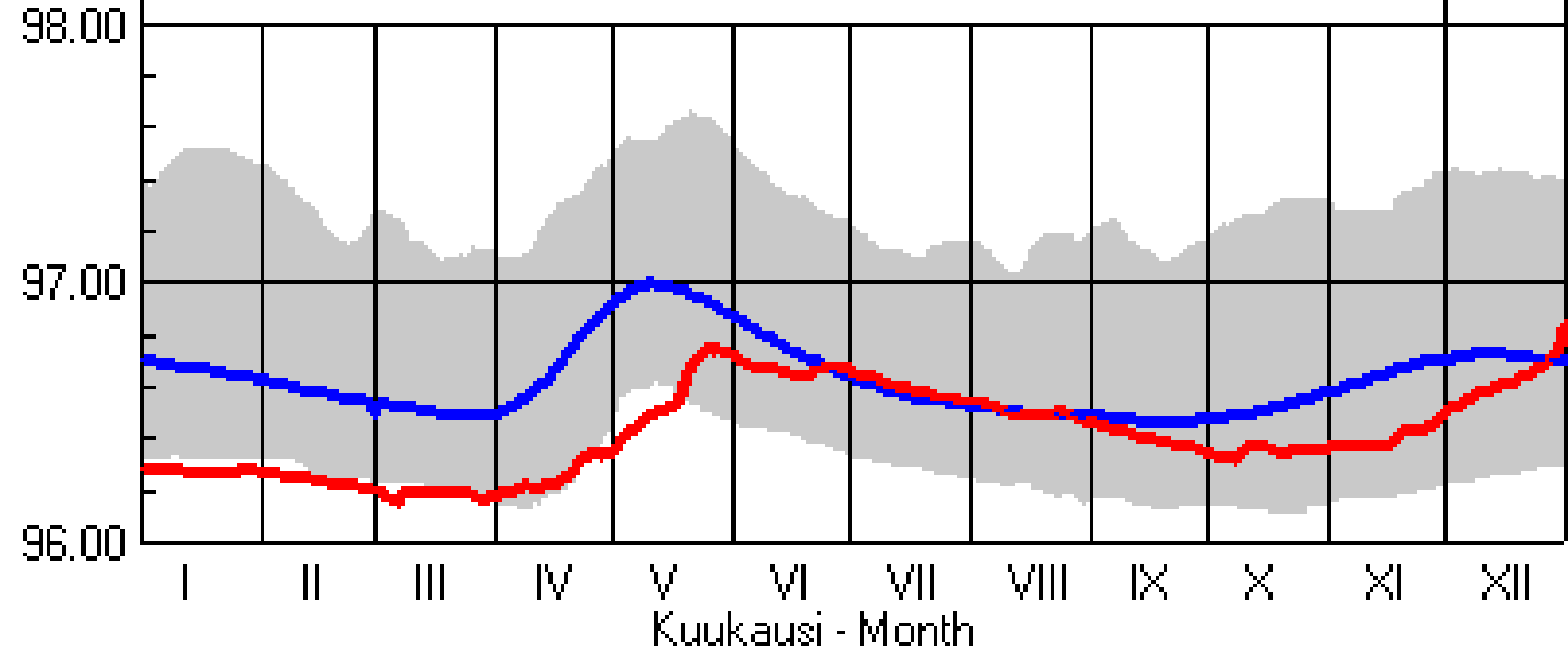


N60+m

# Vedenkorkeus - Water stage

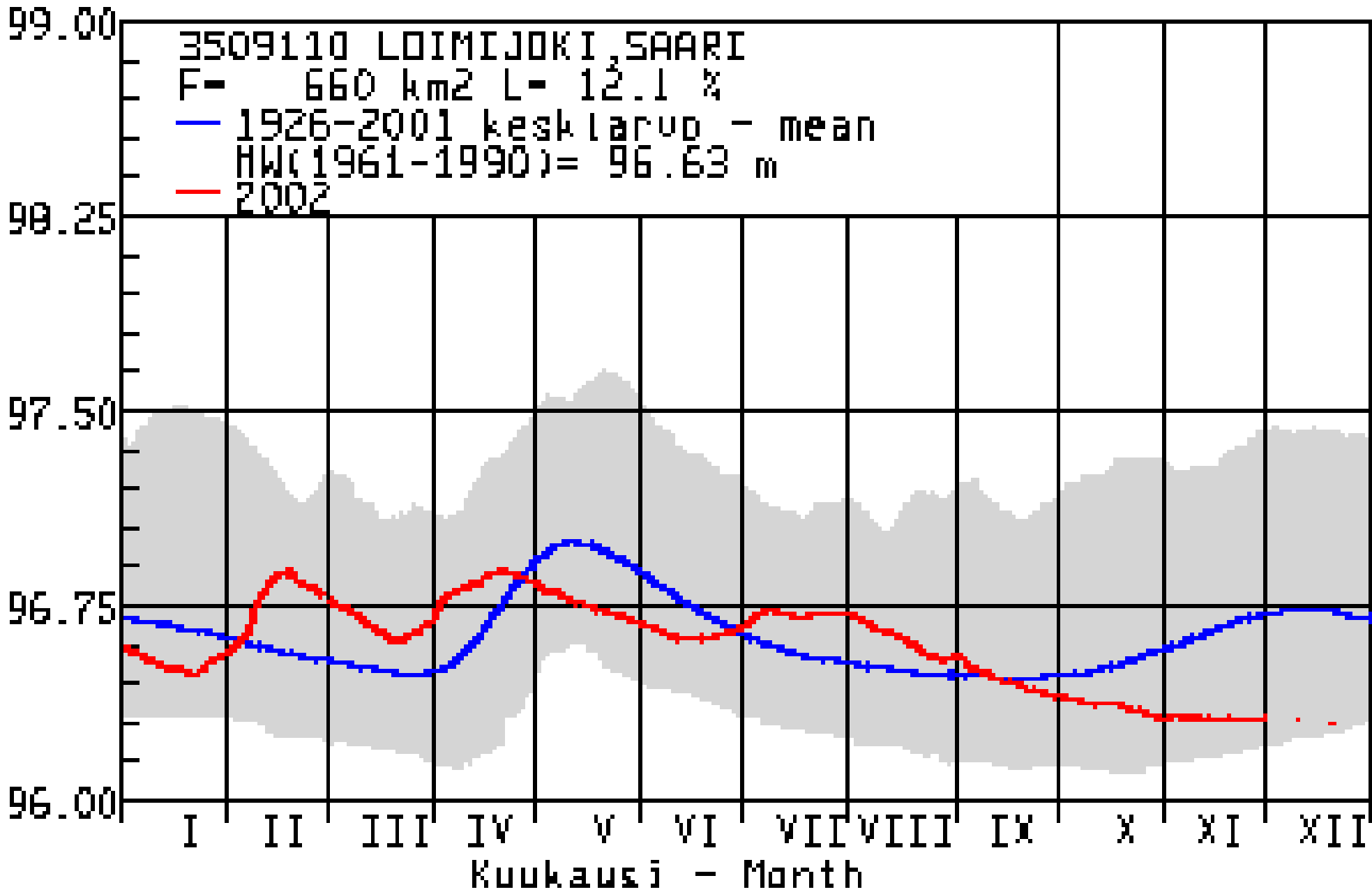
3509110 Pyhäjärvi, Saari  
F= 660 km<sup>2</sup> L= 12.1 %  
M<sub>w</sub>(1961-1990) = 96.54 m

— 1926-2002 keskiarvo - mean  
— 2003  
N60+0=NN-0.17





# N60+m Vedenkorkeus - Water stage



# N60+n Vedenkorkeus - Water stage

